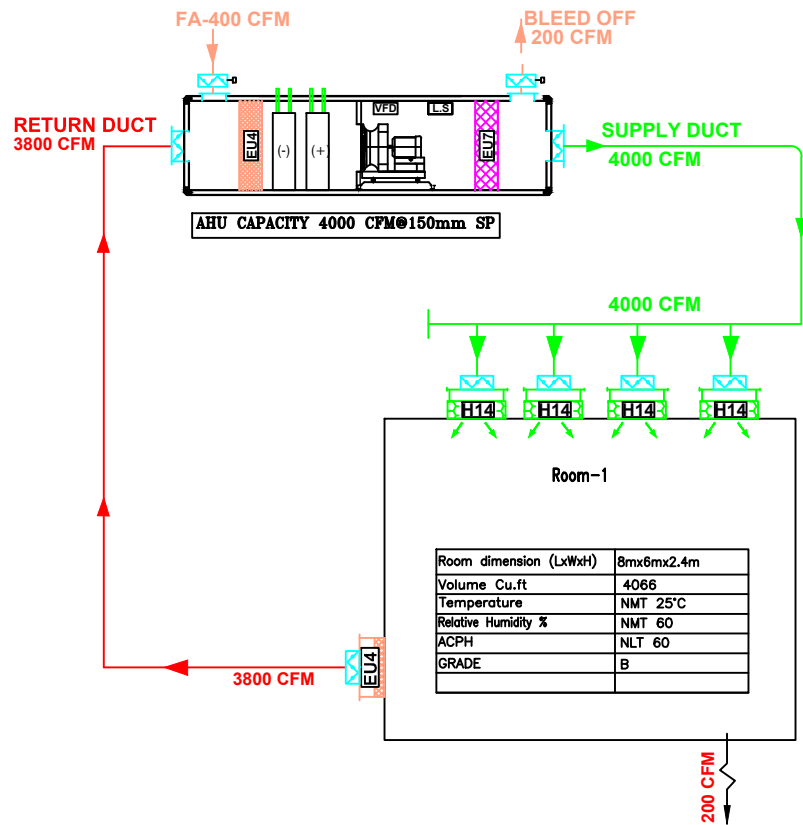


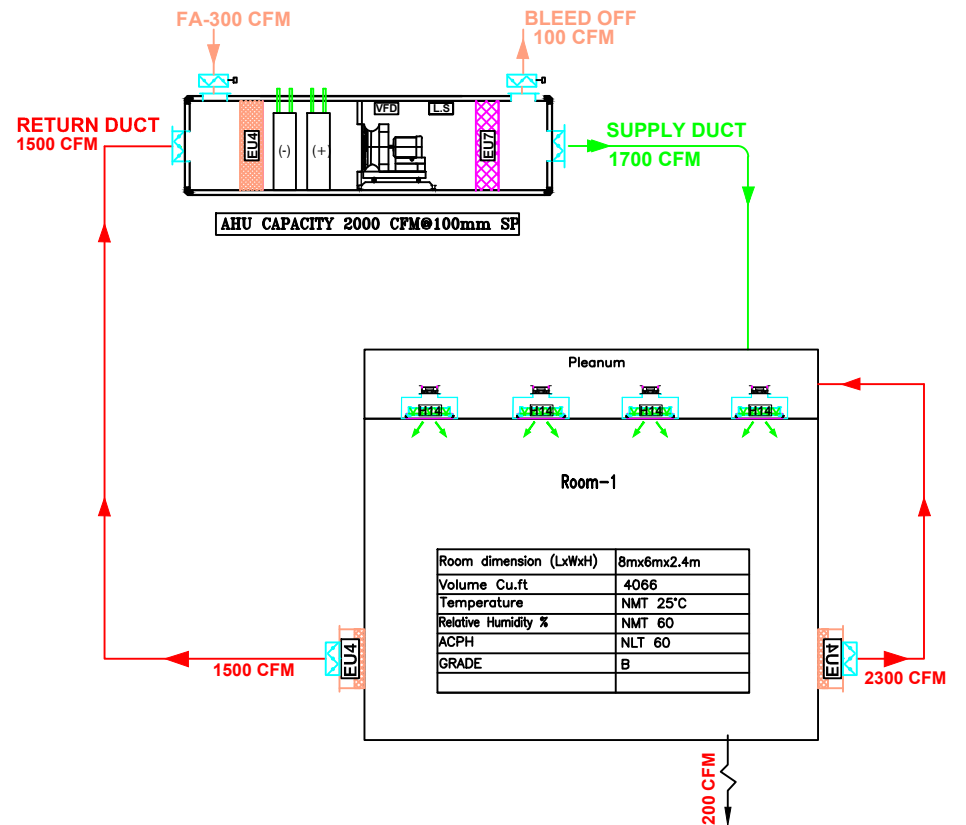
TRADITIONAL AHU



AHU CAPACITY EQUAL TO AIRFLOW REQUIRED BASED ON ACPH

Power required: 5.5 Kw

SUGGESTED AHU



AHU CAPACITY EQUAL TO OFFSET SENSIBLE/LATENT HEAT
KEEPING ACPH SAME AS TRADITIONAL

Power required: 2.2+0.8 Kw=3.0 Kw

CLIENT: SUGGESTIVE DRAWING

PROJECT:

PR PHARMA ENGINEERS PVT. LTD.
Plot No. 113/A/1, lane No.8, Phase-2 IDA,Cherlapally
TEL-040-2726113, FAX-040-27261114

TITLE: COMPARISON BETWEEN
TRADITIONAL AHU Vs SUGGESTED AHU

Drg. No.
PE/RF/03

DRN BY	CHK BY	APPD BY	DATE	SCALE	REV.
YVK		PR	05.04.24	NTS	RO